



STOP

Important!

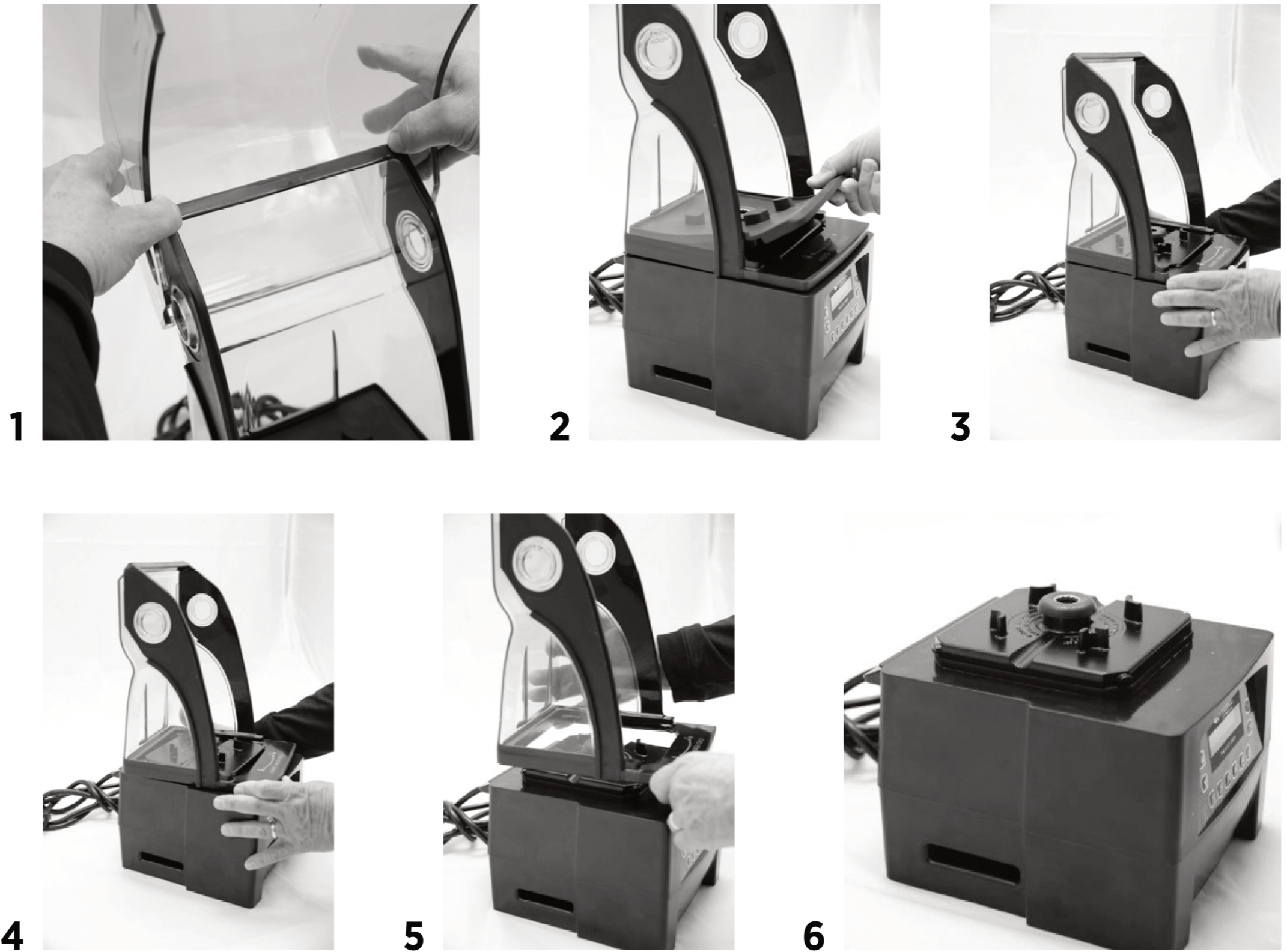
**Please Read Before
You Continue**

**This unit includes a twist lock sound enclosure.
Please refer to the following instructions when
installing or removing the twist lock cover.**

Twist Lock Compact Cover Removal

The Twist Lock cover is designed to be removed without the use of tools. DO NOT force the cover to rotate with tools or other objects. To avoid damaging the cover, apply pressure to the cover frame, not the clear plastic material. To remove the cover, pressure will be applied at two points to disengage the cover from locking tabs on the motor plate.

1. Remove the compact cover door to prevent it from closing unexpectedly. Lift the handle to open the cover. Gently spread the sides of the door over the round hinges and remove.
2. Lift up on the front of the centering pad and peel away from the motor base. Lift it up and over the drive socket to remove.
3. Grasp the bottom frame of the cover with two hands as shown.
4. With equal pressure and in one motion, use the index finger to apply pressure at the back of the cover frame while at the same time apply pressure with your right thumb to unlock and twist the cover away from center in a counter-clockwise direction.
5. If necessary, continue applying pressure at these two points until the cover is free and can be separated from the motor base.
6. Once disengaged, lift the cover up and away from the blender base.



Twist Lock Compact Cover Installation

The centering pad **MUST** be used on the motor base during use to keep the Twist Lock Compact Cover in place. **DO NOT use the machine without the centering pad.**

1. Put the twist lock compact cover on top of the blender base. Align the four locking tabs on the motor adapter plate with the openings on the compact cover.
2. Twist the compact cover clockwise on the motor base to lock it in place.
3. Align the rail guides on the centering pad with the slots between the compact cover and the motor adapter on the motor base.
4. Put the centering pad in place on the motor base in the proper alignment.
5. From the back of the motor base working towards the front, apply pressure on the centering pad to push it into position on the motor base, making sure that the centering pad is completely seated under the drive socket.
6. To reinstall the cover door, gently spread the sides of the door and place the door hinge cutouts over the round hinges.

